

# MONTHLY MEMBERSHIP PROGRESS REPORT

District 4 C1

Results as of: 1/31/2024

GMT:

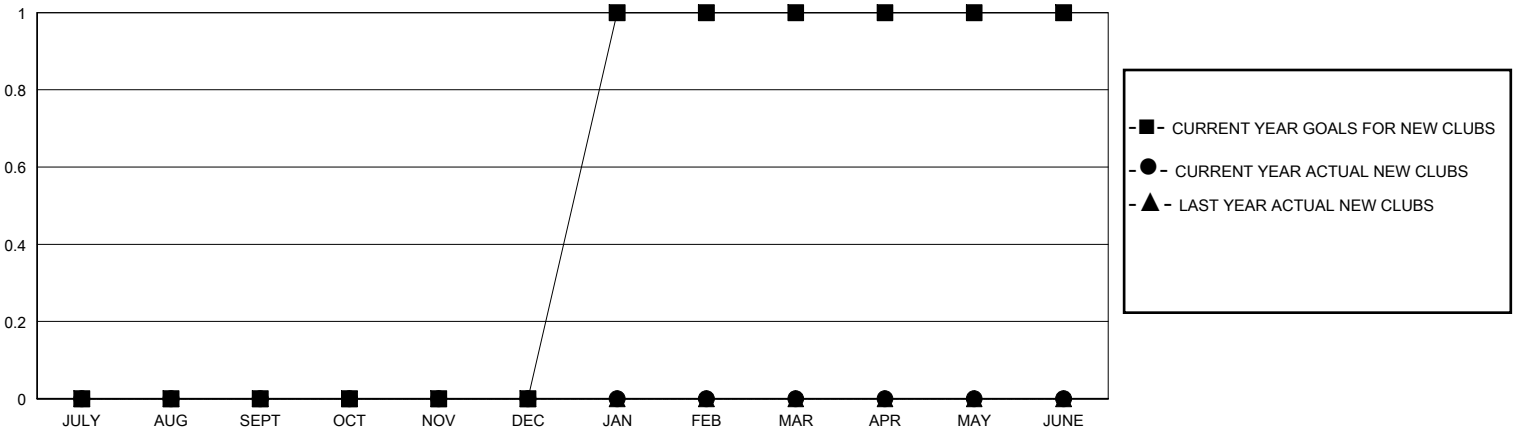
LOCATION CALIFORNIA

GMT CA

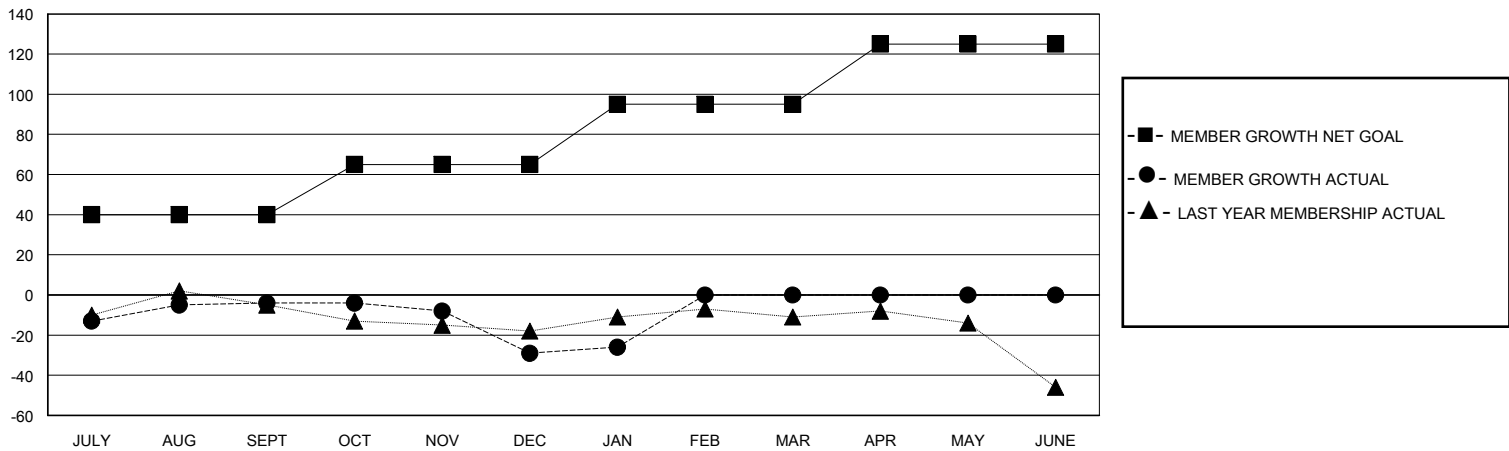
Clubs			
RESULTS FOR 2023-2024			
QUARTER	NEW CLUB GOAL	NEW CLUBS	DROPPED CLUBS
JULY/AUG/SEPT	0	0	0
OCT/NOV/DEC	0	0	1
JAN/FEB/MAR	1	0	0
APR/MAY/JUNE	0	0	0

Members			
RESULTS FOR 2023-2024			
QUARTER	MEMBER GROWTH NET GOAL	MEMBER GROWTH ACTUAL	DROPPED MEMBERS ACTUAL (including transfers)
JULY/AUG/SEPT	40	32	28
OCT/NOV/DEC	25	16	38
JAN/FEB/MAR	30	15	10
APR/MAY/JUNE	30	0	0

GOALS AND ACTUAL NEW CLUBS CUMULATIVE



GOALS AND ACTUAL MEMBERS CUMULATIVE



DROPPED CLUBS: 1

22 CLUBS OF 36 ADDED 1 OR MORE NEW MEMBERS

GENDER DISTRIBUTION

MALE 540 (63.98%)  
FEMALE 304 (36.02%)

DROPPED MEMBERS

DECEASED	4
CLUB CANCELLED	9
OTHER	63
<b>TOTAL</b>	<b>76</b>

[CLICK HERE FOR CUMULATIVE MEMBERSHIP DATA](#)

TOTAL FAMILY UNIT MEMBERS	166
FAMILY MEMBERS PAYING HALF DUES	86